

LUBING
GREENTEC

GREENTEC FOGGING-SYSTEM
FOR GREENHOUSES



ADVANTAGES OF GREENTEC FOGGING-SYSTEMS

LUBING GreenTec Fogging-Systems use the principle of direct evaporative cooling for effective cooling and humidification of the ambient air, thus making a significant contribution to optimum growth conditions.

- Optimum cooling performance and homogeneous distribution of moisture due to 70 bar water pressure and special high-pressure nozzles:
To achieve rapid evaporation of the water mist and thus good cooling performance without wetting, the water drops must be smaller than 20 micrometers. The GreenTec high-pressure nozzles produce a drop size of only 5 micrometers.

- Reduction of irrigation
- Increase yields through stable humidity and associated increased plant production:
Stable humidity in the greenhouse helps plants keep the stomata open for a stable supply with nutrients.
- Easy to install
- Possibility to control greenhouse areas separately
- Uncompromising quality and reliability

SYSTEM COMPONENTS



Pump unit D-Line

- pump unit with direct drive
- supply several sections with one pump unit



Touch Controller

- interactive controller for the control and monitoring of the pump unit
- easy handling via touchscreen



Filter unit

- central filter unit for particle-free water



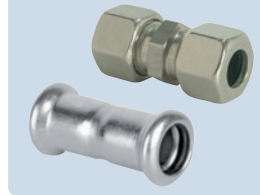
Nozzle line with nozzle

- stainless steel tube (6 m) with welded adapter and stainless steel nozzle



Valve

- solenoid valve for separate activation of different areas
- easy installation – also on existing systems



Cutting ring coupling and Press Fix made of stainless steel

- cutting ring coupling for secure connection of the nozzle lines
- Press Fix: joint unit – just set in and press to fit

CAPACITY

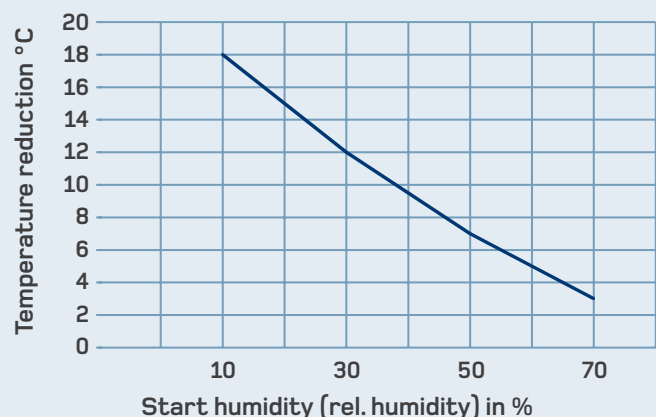
Maximum cooling capacity

Start temperature	36°C	36°C	36°C	36°C
Start humidity	10%	30%	50%	70%
End temperature	18°C	24°C	29°C	33°C
End humidity	85%	85%	85%	85%
Cooling capacity	18°C	12°C	7°C	3°C

Flow rate pump types:

- 2 l/min (40 nozzles)
- 5 l/min (60 nozzles)
- 12 l/min (150 nozzles)
- 21 l/min (250 nozzles)
- 30 l/min (350 nozzles)
- 38 l/min (400 nozzles)
- 70 l/min (800 nozzles)

Other pump sizes on request.



LUBING
GREENTEC

Further information under
WWW.LUBING-GREENTEC.COM

LUBING Maschinenfabrik GmbH & Co. KG

Lubingstraße 6 · 49406 Barnstorf

☎ +49(0)54 42 - 9879-0

☎ +49(0)54 42 - 9879-33

www.lubing-greentec.com · info@lubing-greentec.com

0847-1/22-06 · Subject
to technical changes