

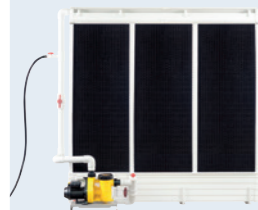
## VERSIONS

The Pad-System is available in the following basic sets<sup>1)</sup>:



For paper pads and LUBING plastic pads

Pad thickness	3 m	6 m	12 m	18 m	24 m	30 m	36 m	42 m
4"	7959	7960	7962	7964	7966	7970	7972	7974
6"	7949	7950	7952	7954	7956	7980	7982	7984
Pump	48 03 021	48 03 011			48 03 031			



For other plastic pads

Pad thickness	3 m	6 m	12 m	18 m	24 m	Connection set <sup>2)</sup>
6"	7989	7990	7992	7994	7996	Pad-Stärke 5 m
Pump	48 03 021	48 03 011		48 03 031		4" 7938
						6" 7939

<sup>1)</sup>The basic sets include all necessary components: the water gutter system, the water distribution system and the supply unit, completely assembled.

## TECHNICAL DATA

### Recommended installation



### Pump types



Type 4  
48 03 021

Type 11  
48 03 011

Type 25  
48 03 031

<sup>2)</sup> Connection kits include Ø2" pipes (4 x 2.5 m), brackets, straight connectors and 2 x 90° elbows and connection accessories.

Max. Pad length after connection set: 4.5 m for paper pads, 3.0 m for plastic pads.

The standard voltage for all pumps is 230 V / 50 Hz. Special voltages on request.

## SUITABLE COMPLEMENT



Plastic-Pads

Fogging-System

Curve Conveyor

# LUBING GREENTEC

LUBING Maschinenfabrik GmbH & Co. KG

Lubingstraße 6 · 49406 Barnstorf

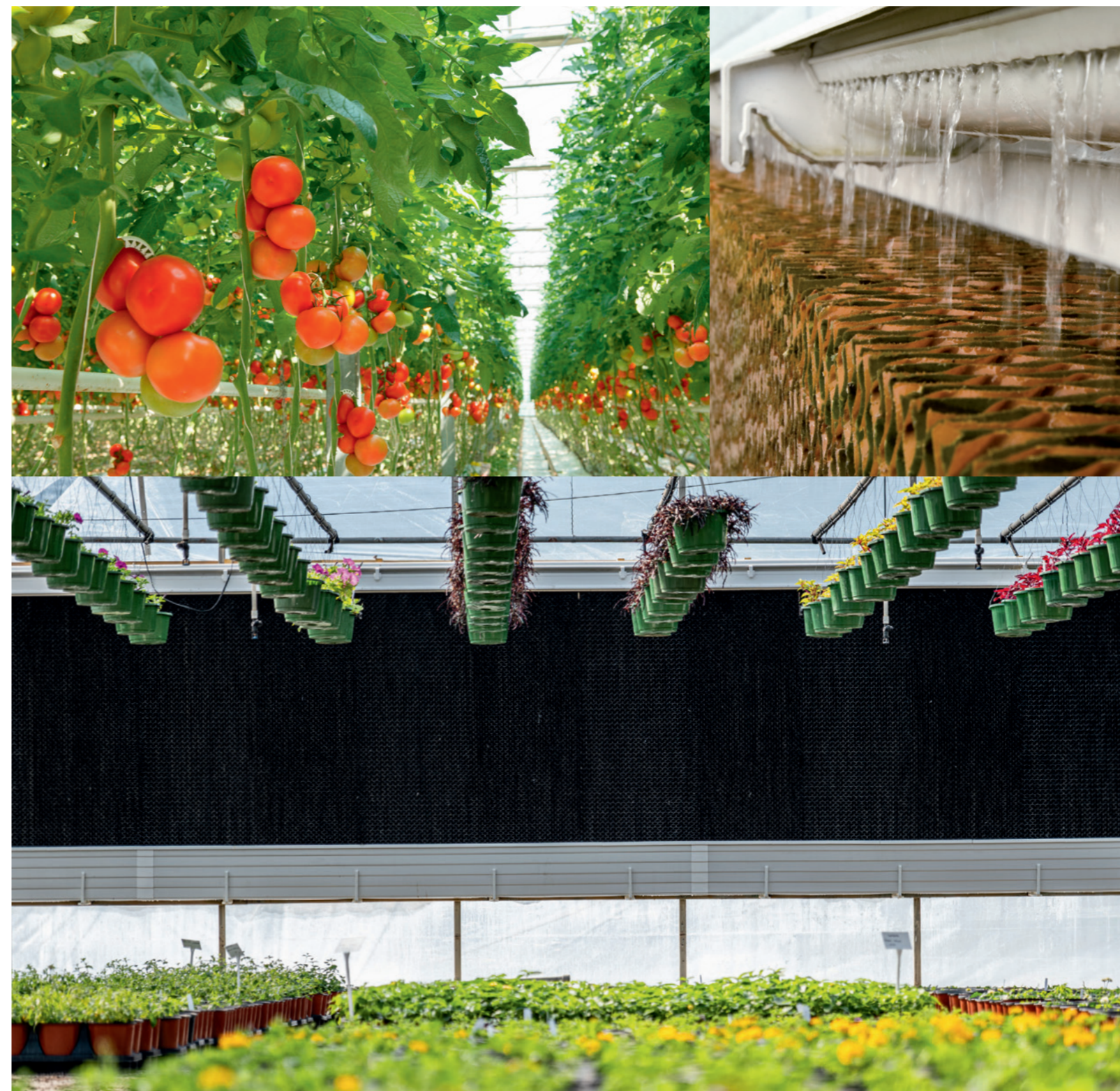
+49(0)54 42 - 9879-0

+49(0)54 42 - 9879-33

www.lubing-greentec.com · info@lubing-greentec.com

# LUBING GREENTEC

## PAD-SYSTEMS FOR GREENHOUSES



# LUBING GREENTEC PAD-SYSTEM

The LUBING Pad-Climate-System is used in areas where highly efficient cooling is required. It can be used for many different cooling purposes.

## The technology of evaporative cooling

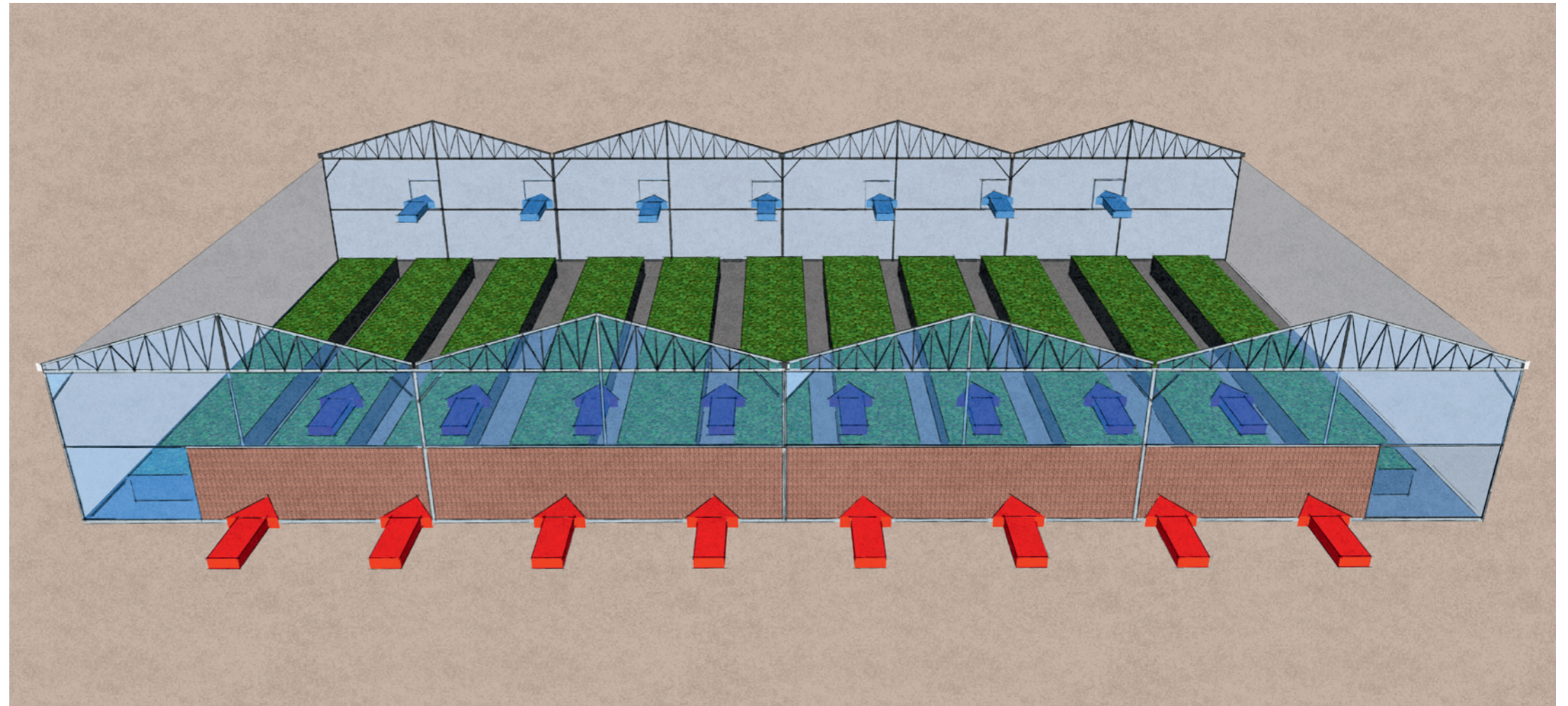
Water is transported through the system from a pump station and directed onto the pads from above via a water distribution pipe and the deflector.

The water then flows over the corrugated surface of the pads. Some of the water evaporates due to the warm and dry air flowing through the pads.

The remaining water is used to clean the pads and flows back to the supply unit via a water channel system.


The thermal energy required for evaporation is obtained directly from the air. Therefore, the air coming out of the pads is cooled and humidified at the same time - without any additional external energy supply for the evaporation process:

The Pad-System is available with plastic or paper pads in different sizes and power levels.



## ADVANTAGES OF THE LUBING PAD SYSTEMS

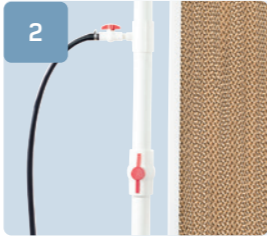
- easy installation thanks to the newly designed clip profiles
- no corrosion – all parts made of PVC or stainless steel
- the water gutter contains the entire water requirement for the system; no external water tank is needed
- ideal water distribution over the entire pad length due to the newly designed deflector with integrated hinge system
- newly designed water trough: rodent-proof cover, perfect water recirculation
- robust centrifugal water pumps available in different sizes and different voltages



1

**Water distribution**


- special distribution pipes for paper and plastic pads
- newly developed deflector
- even water distribution over the whole pad length



2

**Ball valves**

- 2" ball valve in line for fine adjustment of water quantity
- 1" ball valve (T-piece) for adjustment of permanent water drain (bleed-off)



3

**Deflector**

- newly developed deflector profile with integrated hinge system
- easy access, quick inspection and easier cleaning possibility



4

**Clip function**

- all profiles with clip function for easy attachment to the pipe holder
- high stability due to pad guides
- easy exchange of pads



5

**Water gutter**

- water gutter for complete water demand of the system – no external water tank necessary
- holder for fixing the water gutter to the wall or floor



6

**Supply unit**

- delivery completely assembled
- including integrated flushing adapter for thorough flushing of the system
- float valve for constant water level in the system



7

**Water pumps**

- centrifugal pumps with integrated filter and 2" pipes
- Pumps available in three different sizes and with different voltages for different system lengths (see back side)



8

**Water gutter cover**

- perfect water recirculation thanks to newly designed pad supports
- rodent proof
- optional splash protection profile available for plugging on

**LUBING  
GREENTEC**

Further information under [WWW.LUBING-GREENTEC.COM](http://WWW.LUBING-GREENTEC.COM)